

White Oak Partnership

*ensuring the sustainability of
white oak*

Proposing a Partnership

Establish a partnership to identify and provide solutions for critical issues needed to sustain white oak

Proposing a Partnership

WHY

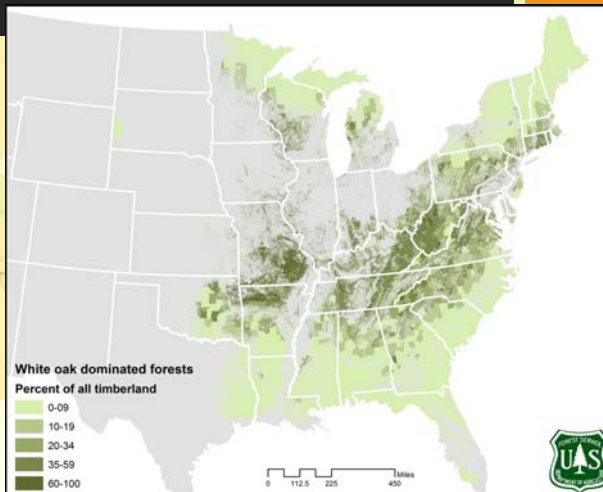
- Mid and long-term threats to sustainability, supply, pricing
- Broad multi-sector interest in timber supply
- Species is important for wildlife and ecological integrity
- Agencies, universities, associations, industries share similar concerns
- Working together provides a better opportunity to make headway in understanding and effectively dealing with white oak issues rather than a shot-gun, non-collaborative approach

Partners

- **Industries** - using/dependent on white oak
- **Agencies** - technical advisement, monitoring, research, managing public lands, funding
- **Universities** - research and education
- **Associations** - industry, forestry, wildlife, natural resource conservation
- **Non-profits** - conservation

Geographic Focus

white oak
sourcing
area



Chris Oswalt, USDA Forest Service, SRS FIA

Potential Focus Areas

- Resource Monitoring
- Management
- Research
 - Genetics, Physiology, Silviculture, Ecology, Economics, Policy
- Education and Outreach

RESOURCE MONITORING

Use existing forest resource monitoring (FIA, TPO, etc.) to focus on white oak

- Assess the status of the oak resource
- Provide product specific information
- Estimate and model forest growth and drain
- Global warming, changing demand, etc.

OAK MANAGEMENT

Collaboratively develop scientifically based management strategies to sustain white oak

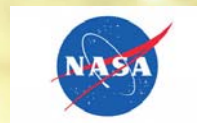
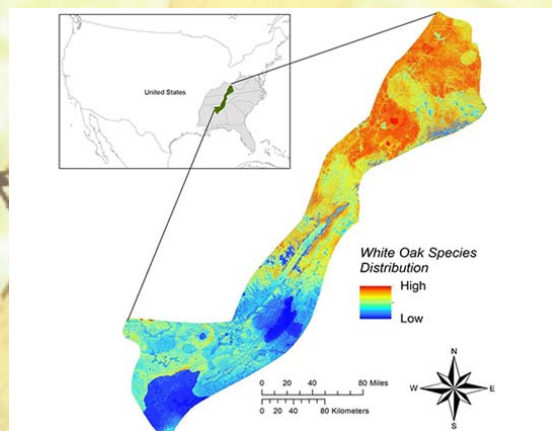
Disseminate through technical assistance and programs while addressing diverse landowner objectives, market demands and threats to forest health

Example: develop white oak management guidelines - conduct training for forest and natural resource professionals, industry, and public and private forest owners

RESEARCH - Mission Areas

- **Silviculture, Economics, Policy**
 - Understand the dynamic processes driving the region's white oak resource
 - how forest change, management, product competition and trade policy will impact the market economics of reliant sectors
- **Forest Genetics and Health (Forest Health Center)**
Risk, health, and genetics of the white oak resource coupled to tree-improvement efforts to address management challenges and health threats
- **Physiology and Ecology**
Understand physiological characteristics critical for regeneration and development in mixed species stands

RESEARCH - Mission Areas

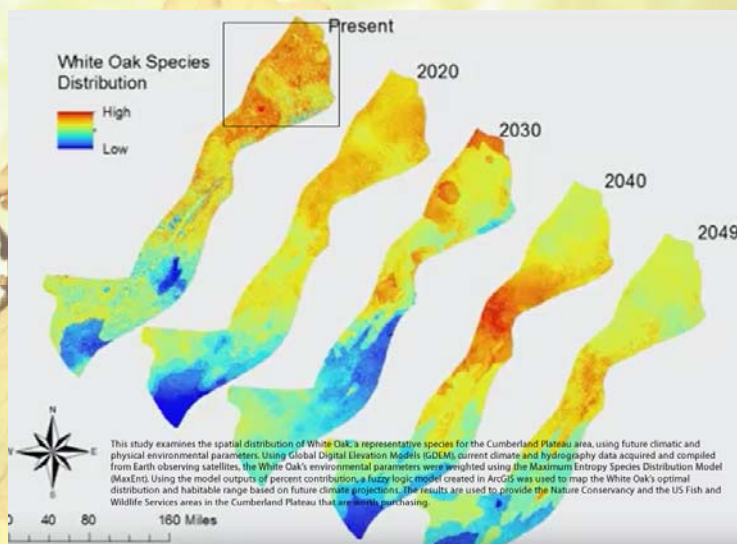


Cumberland Plateau
Eco Forecasting

NASA DEVELOP -
Marshall Space Flight
Center

PARTNER(S) The Nature Conservancy U.S. Fish and Wildlife Service, U.S. Forest Service
NASA EARTH OBSERVATIONS Landsat 8 OLI Terra ASTER
TEAM: Amanda Weigel (lead), Jean Baptiste Kayitare, Robert Rossell
ADVISOR(S): Dr. Jeffrey Luvall (NASA Global Hydrology and Climatology Center)

RESEARCH - Mission Areas



<https://www.youtube.com/watch?v=9lyzYIBI-60>

EDUCATION and OUTREACH

Develop education and outreach programs and networks to:

- Inform decision makers on the importance of white oak
- Promote white oak management
- Establish effective workforce for industries using white oak and entities managing and assisting in white oak management

Next Steps

- **Establish Partnership**
 - UK Dept. of Forestry can house the Partnership
- **Reach out to other potential partners**
- **Establish communication platform for the partnership**
- **Identify critical issues**
- **Prioritize problems and opportunities**
- **Explore/Develop a WHITE OAK INITIATIVE**

White Oak Partnership

IDENTIFYING CRITICAL ISSUES

- common across all sectors
- sector specific

Sources of data

- resource and market data
- surveys
- SWOT analysis - scientifically credible tool to determine critical issues and their relative importance

White Oak Partnership

**Potential development of a
WHITE OAK INITIATIVE**

**Tom Martin
American Forest Foundation**

White Oak Partnership

Sign Up for Partnership

